

## 20' Dry Freight Container

Payload: 38,600 lbs.  
17,508 kgs.

### Interior Specifications.

Length : 19' 5"  
Width : 7' 8 3/8"  
Height : 7' 9 5/8"

Cubic Capacity: 1,164 cu.ft.  
32.96 cbm.



## 40' High Cube Container

Payload: 45,200 lbs.  
20,502 kgs.

### Interior Specifications.

Length : 39' 3/8"  
Width : 7' 8 3/8"  
Height : 8' 8"

Cubic Capacity: 2,700 cu.ft.  
76.46 cbm.



## 20' Open Top Container

Payload: 38,100 lbs.  
17,282 kgs.

### Interior Specifications.

Length : 19' 5"  
Width : 7' 8 1/8"  
Height : 7' 9 5/8"

Cubic Capacity: 1,126 cu.ft.  
31.88 cbm.



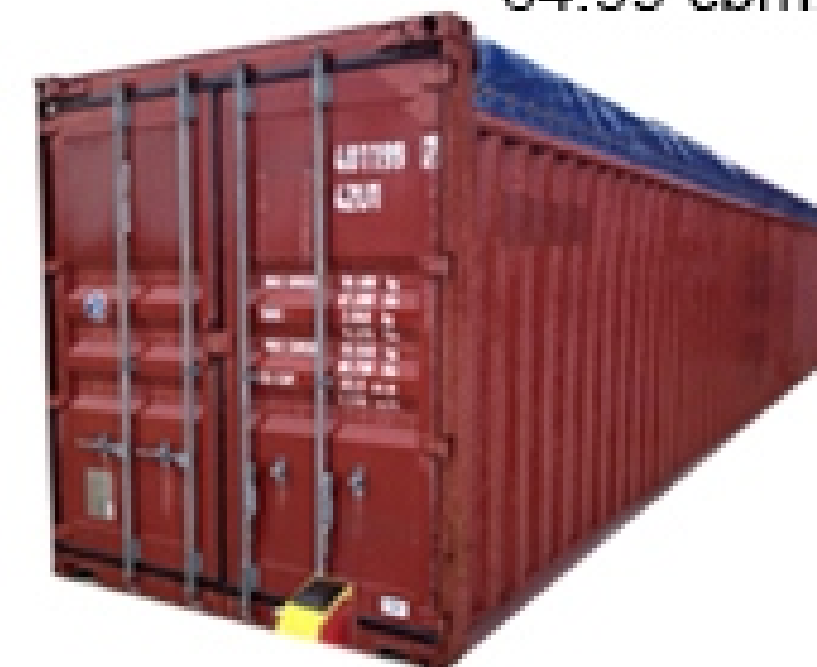
## 40' Open Top Container

Payload: 45,250 lbs.  
20,525 kgs.

### Interior Specifications.

Length : 39' 6 1/8"  
Width : 7' 8 3/4"  
Height : 7' 5 7/16"

Cubic Capacity: 2,295 cu.ft.  
64.99 cbm.



## 20' Collapsible Flat Rack

Payload: 39,160 lbs.  
17,762 kgs.

### Interior Specifications.

Length : 19' 6"  
Width : 7' 5"  
Height : 6' 9 3/4"



## 40' Collapsible Flat Rack

Payload: 55,600 lbs.  
25,219 kgs.

### Interior Specifications.

Length : 39' 7"  
Width : 8' 0"  
Height : 6' 9 3/4"



## 20' Reefer Container

Payload: 38,118 lbs.  
17,290 kgs.

Cubic Capacity: 950 cu.ft.  
26.90 cbm.

### Interior Specifications.

Length : 17' 10"  
Width : 7' 4 1/16"  
Height : 7' 3 1/2"



## 40' High Cube Reefer Container

Payload: 57,120 lbs.  
25,909 kgs.

Cubic Capacity: 1,942 cu.ft.  
54.99 cbm.

### Interior Specifications.

Length : 38' 0"  
Width : 7' 6"  
Height : 8' 4"

